



Hydropro series

EN

Product & Training Manual

Commercial Wet and Dry Vacuum Cleaners



pacvac.com

Product & Training Manual
Commercial Wet and Dry Vacuum Cleaners

Contents

General Safety Instructions4

Product Specific Safety Instructions.....5

Symbol Definitions.....5

Specifications6

Operate Right7

How To Swap A Floor Tool Insert7

Safety and Maintenance Checks8

Safe Disposal8

Troubleshooting9

Service Requirements.....9

Warranty10

Spare Parts - Hydropro 21 11

Spare Parts - Hydropro 36..... 12

Spare Parts - Hydropro 76..... 13

Warranty Notes..... 14

CAUTION Read this Product & Training Manual before using the machine and instruct operators if applicable.
RETAIN FOR FUTURE REFERENCE.

This manual applies to the Pacvac Hydropro Series: Hydropro 21, Hydropro 36 and Hydropro 76 wet and dry vacuum cleaners.

General Safety Instructions

WARNING To reduce the risk of fire, electric shock or injury, read all instructions before using.

When using an electrical appliance, basic precautions should always be followed.

1. This manual shall be considered an integral part of the machine and should be carefully looked after for subsequent reference.
2. **WARNING** Operators shall be adequately instructed on the use of this machine.
3. **WARNING** This machine is not suitable for picking up hazardous dust.
4. **WARNING** Do not allow the power cord to come into contact with rotating brushes of floor tools.
5. **WARNING** Do not use this machine in wet conditions.
6. **CAUTION** This machine shall be stored and used indoors only.
7. **WARNING** If foam or liquid escapes from the machine, switch off immediately.
8. **CAUTION** Clean the water level limiting device regularly and examine it for signs of damage.
9. Remove the machine from packaging and ensure it and all its accessories and attachments are present and in perfect condition. Contact the place of purchase immediately in the event of any discrepancies.
10. The electrical specifications of this machine are noted on the data plate which is located near the underneath the top handle. Ensure the specifications correspond to those of the mains power supply in your area. If the machine is without a data plate, contact the place of purchase immediately.
11. This machine is intended for commercial use, for example in hotels, schools, hospitals, factories, shops or offices.
12. **WARNING** This machine is intended for the vacuuming of dry dust and/or small debris off dry carpeted or hard floor surfaces in indoor areas only.
13. **WARNING** Do not use the machine without the dust bag and filters in place.
14. Do not restrict the vacuum cleaner's airflow. Maintain the vacuum cleaner regularly so that all filters and openings are free of dust, lint, hair build-up or anything else which may affect airflow. Refer to the Safety and Maintenance Checks in this Product & Training Manual.
15. Regularly check the power cord for damage, such as cuts, abrasions, exposed wiring or aging. If the power cord or plug is damaged, the complete power cord must be replaced by your local Authorised Pacvac Service and Warranty Agent in order to avoid an electric shock. The power cord should only be replaced with a Pacvac Genuine Spare Part with the same specifications.
16. If the machine has been dropped, damaged, left outdoors or has been exposed to liquids, return it to your local Authorised Pacvac Service and Warranty Agent for a safety check.
17. Do not use the machine to pick up flammable or combustible liquids, such as petrol etc. and do not use in areas where they may be present.
18. Do not vacuum anything that is burning or smoking such as cigarettes or hot ashes.
19. Do not vacuum up hard or sharp objects such as glass, nails, screws etc.
20. Keep hair, loose clothing, fingers and all parts of the body away from moving parts and openings.
21. Keep the machine and power cord away from heated surfaces.
22. Do not unplug the machine while it is turned on. Turn the machine off, turn the power off at the power outlet then unplug by grasping the plug and pulling gently to unplug.
23. Do not handle the machine, power cord or plug with wet hands.
24. Unplug from power point when not in use, before servicing or before changing filters and attachments.
25. Do not pull or carry the machine by the power cord.
26. Do not close doors on the power cord and do not pull the cord around sharp edges or corners.
27. Store in an appropriate place after use to prevent tripping accidents.
28. This appliance is not intended for use by persons (including children) with reduced physical, sensory or mental capabilities, or lack of experience and knowledge, unless they have been given supervision or instruction concerning use of the machine by a person responsible for their safety. Children should be supervised to ensure that they do not play with this machine.

Product Specific Safety Instructions

1. **WARNING** This machine is intended for the vacuuming of liquids as well as wet or dry dust and debris off carpeted or hard floor surfaces in indoor areas only.
2. **WARNING** Do not use the machine for suction of dry dust and debris without filters in place. The use of paper or polyester dust bags is optional.
3. **WARNING** Remove polyester filter and dust bag (if using) and ensure foam filter is in place before use for suction of liquid.
4. Check the position of the filter and fastening of latches. Incorrect filter positioning can cause diminished performance and/or serious damage to the machine.
5. The machine features a floating valve that interrupts the vacuum when the tank is full. In the event of a total loss of suction, turn the machine off, turn the power outlet off, unplug the machine and empty the tank.
6. Weekly clean the polyester filter by brushing off or washing, however ensure it is completely dry before reinstalling.
7. **CAUTION** Take extra care if using this vacuum cleaner to clean stairs.
8. The following models have a "A-weighted emission sound pressure level (measured at 1.5 meters) of:
Hydropro 21 - 76 dB(A)
Hydropro 36 - 72 dB(A)
Hydropro 76 - 75 B(A) / 73dB(A) wispa mode
9. Brush and Attachment Use Part No. FLT003/FLF003/FLF004 - Dry Floor Tool is intended for vacuuming of dry dust and debris off floor surfaces.
10. Part No. FLT011/FLF005/FLF006 - Wet Floor Tool is intended for vacuuming of liquid or wet dust and debris off floor surfaces.
11. Part No. ACC001/ACC004 - Dusting Brush is intended for vacuuming of liquid or dust and debris from delicate surfaces.
12. Part No. ACC002/ACC005 - Crevice Tool is intended for vacuuming of liquid, dust and debris from crevices.
13. Part No. ACC003 - Upholstery Tool is intended for vacuuming of liquid or dust and debris from upholstered surfaces.
14. This appliance and attachments should be packed in double wall corrugated cardboard boxes with dimensions of approximately:
Hydropro 21 - 41cm x 41cm x 58cm
Hydropro 36 - 41cm x 41cm x 77cm
Hydropro 76 - 60cm x 59cm x 105cm

RETAIN THESE SAFETY INSTRUCTIONS FOR FUTURE USE.

Symbol Definitions

1. Attention!



2. Operator's Manual; Operating Instructions



Specifications

Model Name	Hydropro 21	Hydropro 36	Hydropro 76
Model No.	01HY021VW	01HY036VW	01HY076VW
Volts/Frequency	230-250V AC 50/60Hz	230-250V AC 50/60Hz	230-250V AC 50/60Hz
Motor	1200W two-stage by-pass	1200W two-stage by-pass	2 x 1100W two-stage by-pass
Noise Level (at 1.5m)	76dB(A)	72dB(A)	75dB(A)
Filtration	Wet one-stage, Dry two-stage (HEPA rated filter available)	Wet one-stage, Dry two-stage (HEPA rated filter available)	Wet one-stage, Dry two-stage (HEPA rated filter available)
Volumetric Airflow (Max.)	55L/s	55L/s	67L/s / 45L/s (single motor)
Capacity	21L	36L	76L
Weight (excluding power cord assembly and hose)	8.8kg (ex. power cord assembly & hose assembly)	9.6kg (ex. power cord assembly & hose assembly)	23.1kg (ex. power cord assembly & hose assembly)
Power Source	Mains, 8m power cord, hardwired	Mains, 8m power cord, hardwired	Mains, 8.5m power cord, hardwired

*Technical specifications are subject to change without notice.

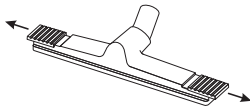
Operate Right

How to vacuum easier and faster with no back strain.

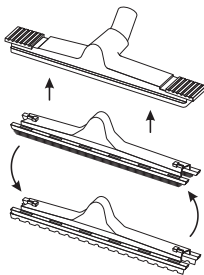
1. Fit the appropriate floor tool or swap insert by sliding out the end panels on the floor tool, fitting insert and then sliding end panels back into position (Refer to diagram below).
2. Stand upright, with the bent handpiece section parallel to the floor.
3. Hold the bent handpiece with one hand at a comfortable arm's length. Use your free hand to hold the hose to help guide the vacuum as you work.
4. Move forward and away from the power point.
5. Use easy underarm swinging motion when detail cleaning and short dabs when spot cleaning, always standing upright.
6. Once the end of the power cord has been reached and work completed, return to the power point along the cord line and disconnect the power cord from the power point.
7. If work is not completed move to the next area, connect power cord to the nearest power point and repeat steps 1 through 6.
8. If work is completed disconnect power cord from power point then wind from the canister towards the end of the power cord to reduce likelihood of cable twists. In the process check for nicks, cuts, fractures, and knots.

How To Swap A Floor Tool Insert

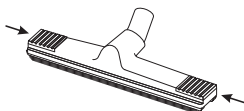
- 1 Push end panels of floor tool outwards to unlock.



- 2 Fit appropriate insert into floor tool.



- 3 Push end panels of floor tool inwards to lock.

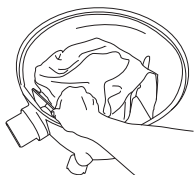


NOTE: Above applies to Hydropro 36 and Hydropro 76 floor tools only.

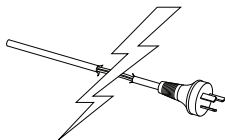
Safety and Maintenance Checks

DAILY

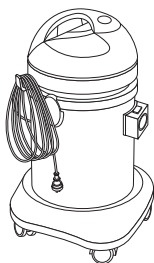
1. Check dust bag daily and replace if full. (NOTE: Dust bag is an optional extra)



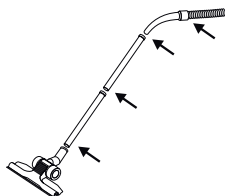
2. Check all power cords, for cuts, abrasions and exposed wiring.



3. Wind up power cord from machine end. Store power cord as shown.

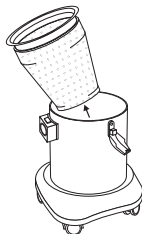


4. Check the floor tool, wand, bent handpiece and hose for any obstructions.



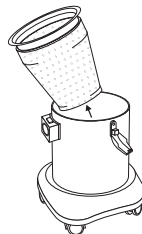
WEEKLY

Clean the polyester filter by brushing off dust build up. The polyester filter can be washed with water and detergent. If washing, ensure the filter is fully dry before reinstalling.



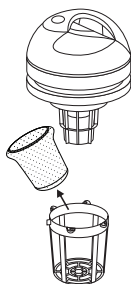
BEFORE WET USE

Remove dustbag and filter for wet use. Replace for dry use.

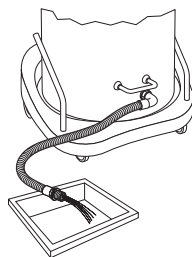


AFTER WET USE

1. Remove sponge filter by rotating float cage in an anti-clockwise direction. Wash and allow to dry before reinstalling.



2. Empty container by tipping



NOTE: Any other servicing should be performed by an Authorised Service & Warranty Agent. Please do not use if any damage is found.

Safe Disposal

Contact your local waste authority for information regarding available recycling and/or disposal options. Or contact Pacvac by emailing support@pacvac.com or phone +61 8 9479 1444 for the latest information.

Troubleshooting

Caution: Always unplug the machine before attempting to solve a problem or when servicing.

Problem	Cause	Solution
Vacuum cleaner not working.	Power cord not firmly plugged into power point.	Plug power cord into power point firmly.
	Vacuum cleaner not turned on.	Press on/off button.
	Circuit breaker or RCD has tripped.	Check the machine is in good working order. If OK, reset circuit breaker or RCD. If circuit breaker or RCD trips again contact your nearest Authorised Pacvac Service and Warranty Agent.
Vacuum cleaner has no/poor suction.	Dust bag full.	Remove, empty and clean dust bag.
	Dust bag not installed correctly.	Remove and empty dust bag making sure the rubber seal is fitted correctly.
	Hose not installed correctly.	Reconnect hose and ensure correctly sealed.
	Blockages.	Remove hose, wand and floor tools; remove any blockages.
	Filters blocked.	Clean filters.
Latches do not clamp properly.	Filter not installed correctly.	Refit filter making sure the rubber edging is correctly fitted around the canister.
	Vacuum head is not placed properly on tank.	Reposition vacuum head on tank and clamp down.
	Latches have been damaged and deformed.	Lightly warm latches with a heat gun. Latches will then return to their original shape. Wait until latches have cooled down before resuming use.

Service Requirements

Our products are designed and built to be functional and durable. For information on use and maintenance please read this Product & Training Manual thoroughly.

Should you require servicing contact your nearest Authorised Pacvac Service and Warranty Agent.

Warranty

Your Pacvac Pty Ltd (Pacvac) product has been manufactured to meet our highest quality standards. We urge you to take good care of your product and be sure to follow instructions carefully. This will provide you with the best possible performance and lifespan of the product.

The inclusion of the following paragraph is a requirement by Australian Law. It explains that consumers have rights by law regardless of any warranties provided or not by a manufacturer or supplier.

"Our goods come with guarantees that cannot be excluded under the Australian Consumer Law. You are entitled to a replacement or refund for a major failure and for compensation for any other reasonably foreseeable loss or damage. You are also entitled to have the goods repaired or replaced if the goods fail to be of acceptable quality and the failure does not amount to a major failure."

In addition to the guarantees under Australian Consumer Law, Pacvac warrants all machines and their components against faulty material and / or workmanship for a period of two years from the date of purchase by the original consumer.

The following explains conditions and what to do in the event of a claim:

Pacvac will replace parts determined as faulty however this does not cover reasonable wear through normal use of any consumable parts, such as but not limited to, bags, filters, hoses, electrical leads, carbon brushes and floor tools etc.

Warranty does not cover any machine or component that has been altered, abused, neglected, modified, used with non-genuine Pacvac components or has not been used and maintained as indicated in this Product & Training Manual.

Warranty repairs can only be carried out by an Authorised Pacvac Distributor or Repairer. Visit our website for your nearest location. Warranty claims are limited to the original warranty period from the date of purchase. Warranty repairs and / or replacements do not extend the original warranty period.

All reasonable expenses associated with returning goods for a warranty claim are the consumer's responsibility.

Claims must be made within two years of the date of purchase and proof of purchase must be supplied with the claim.

To make a claim under warranty, take the product with proof of purchase to the place of purchase. If the place of purchase does not satisfactorily rectify the matter, please contact Pacvac.

Pacvac has the right to request pictures of warranty product failures or to request for those parts be returned to Pacvac's office in Western Australia.

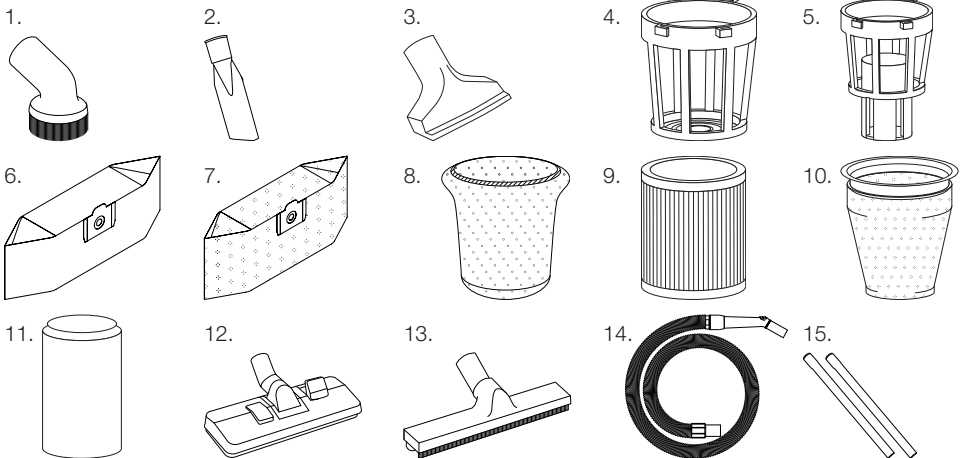
The replacement of any part shall be at Pacvac's discretion.

 +61 8 9479 1444  support@pacvac.com  pacvac.com

Spare Parts - Hydropro 21

Quote these part numbers when ordering spare parts.

No.	Part Name	Part No.
1.	Dusting brush 32mm	ACC001
2.	Crevice tool 32mm	ACC002
3.	Upholstery tool 32mm	ACC003
4.	Small filter cage	CAG003
5.	Float cage	CAG005
6.	Disposable sealed paper dust bag 21L 5pk	DUB010
7.	Disposable sealed SMS dust bag 21L 10pk	DUB011
8.	Foam filter cover	FIL010
9.	HEPA rated filter (small)	FIL012
10.	Filter liner 260mm	FIL014
11.	Plastic float 80mm	FLO001
12.	Combination floor tool 270mm	FLT003
13.	Squeegee floor tool 300mm	FLT011
14.	Push fit bent hose assembly 2m	HOA005
15.	Chrome two piece wand	WND002

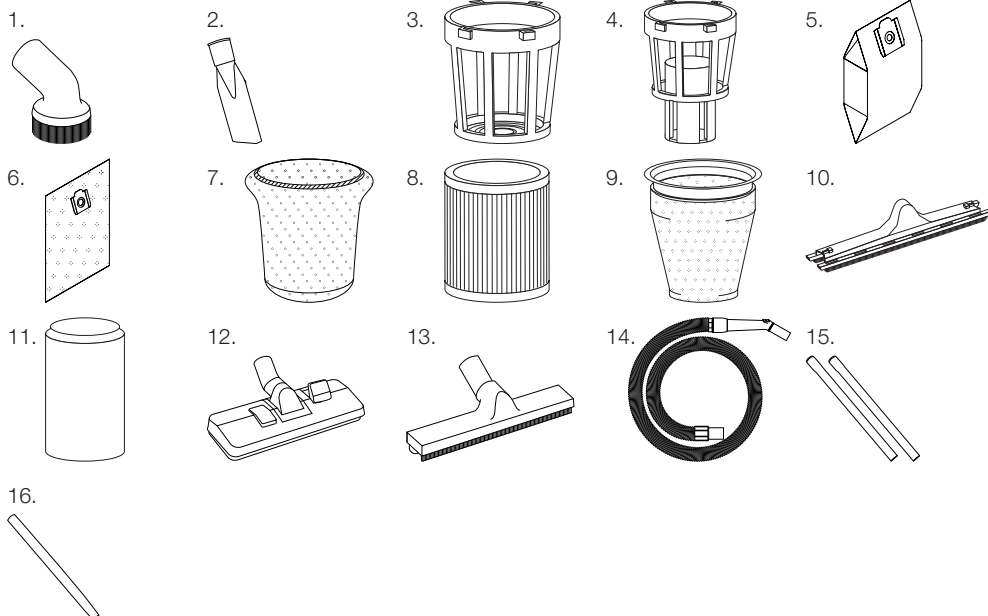


*Part numbers and part profiles are subject to change without notice. This part listing is a reference for genuine Pacvac spare part orders only and may not reflect the parts used to originally build the machine at time of manufacture.

Spare Parts - Hydropro 36

Quote these part numbers when ordering spare parts.

No.	Part Name	Part No.
1.	Dusting brush 38mm	ACC004
2.	Crevice tool 38mm	ACC005
3.	Small filter cage	CAG003
4.	Float cage	CAG005
5.	Disposable sealed paper dust bag 36L 5pk	DUB012
6.	Disposable sealed SMS dust bag 36L 5pk	DUB013
7.	Foam filter cover	FIL010
8.	HEPA rated filter (small)	FIL012
9.	Filter liner 260mm	FIL014
10.	Floor tool insert 300mm	FLF003
11.	Squeegee floor tool insert 300mm	FLF005
12.	Plastic float 80mm	FLO001
13.	Floor tool body 300mm	FLT009
14.	Push fit hose assembly 2.5m	HOA006
15.	Chrome bent piece wand	WND004
16.	Chrome straight piece wand	WND005

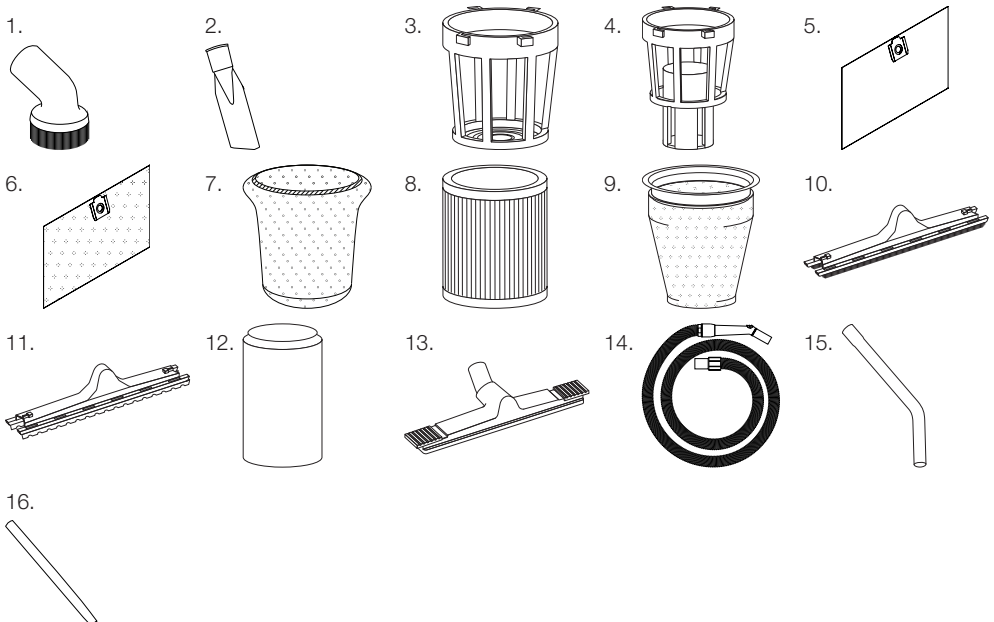


*Part numbers and part profiles are subject to change without notice. This part listing is a reference for genuine Pacvac spare part orders only and may not reflect the parts used to originally build the machine at time of manufacture.

Spare Parts - Hydropro 76

Quote these part numbers when ordering spare parts.

No.	Part Name	Part No.
1.	Dusting brush 38mm	ACC004
2.	Crevice tool 38mm	ACC005
3.	Large filter cage	CAG004
4.	Float cage	CAG005
5.	Disposable sealed paper dust bag 76L 5pk	DUB014
6.	Disposable sealed SMS dust bags 76L 5pk	DUB015
7.	Foam filter cover	FIL010
8.	HEPA rated filter (large)	FIL013
9.	Filter liner 460mm	FIL015
10.	Floor tool insert 400mm	FLF004
11.	Squeegee floor tool insert 400mm	FLF006
12.	Plastic float 80mm	FLO001
13.	Floor tool body 400mm	FLT010
14.	Push fit hose assembly 2.5m	HOA006
15.	Chrome bent piece wand	WND004
16.	Chrome straight piece wand	WND005



*Part numbers and part profiles are subject to change without notice. This part listing is a reference for genuine Pacvac spare part orders only and may not reflect the parts used to originally build the machine at time of manufacture.

Warranty Notes

Online Manual

Visit academy.pacvac.com or scan the QR code to access the online manual.



Revised: March 2021
MAN011-210315-hydropro-series-manual

Pacvac Pty Ltd
ABN: 60 709 396 593
7 Mackay Street, Kewdale WA 6105
AUSTRALIA

 +61 8 9479 1444  support@pacvac.com  pacvac.com